

Wavin



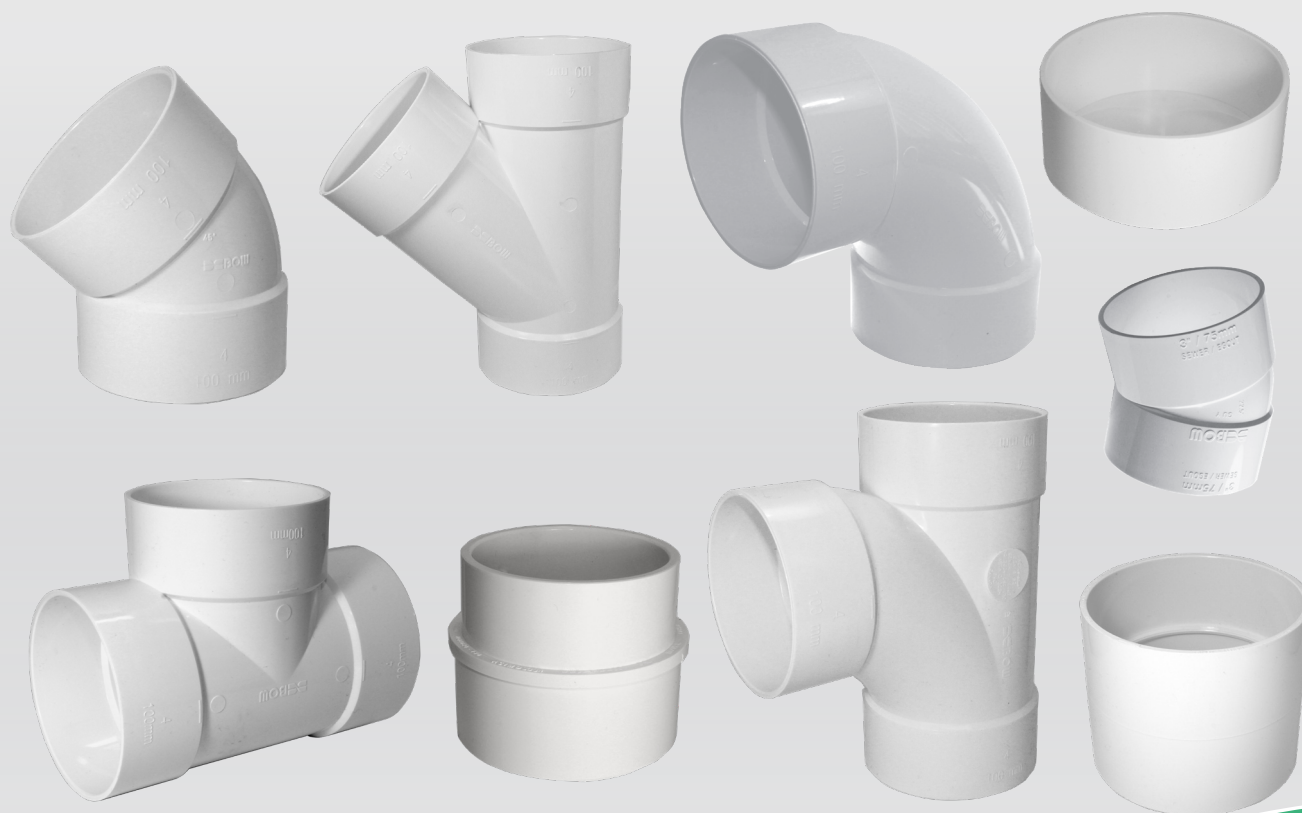
Pricelist PVCSWR-C0526

(Canada)

April 2026, Supersedes PVCSWR-C0325

CSA B182.1

PVC Sewer & Drainage Fittings



BOW Groupe
de Plomberie Inc.

PVC Sewer & Drainage Fittings



Fittings

PVC Fittings



Straight Tee

(Hub x Hub x Hub)

Dimension	Item	Carton	Skid	List Price
3"	650002	35	630	29.38
4"	650010	10	320	32.92
6"	650036	5	90	133.02
6 x 4"	650044	5	90	139.46



Straight Tee

(Spigot x Hub x Hub)

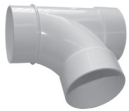
Dimension	Item	Carton	Skid	List Price
4"	650051	10	320	39.37



Sanitary Tee

(Hub x Hub x Hub)

Dimension	Item	Carton	Skid	List Price
3"	650069	10	480	35.09
4"	650077	12	216	45.58



Sanitary Tee

(Spigot x Hub x Hub)

Dimension	Item	Carton	Skid	List Price
4"	650093	5	240	45.58



WYE

(Hub x Hub x Hub)

Dimension	Item	Carton	Skid	List Price
3"	650127	10	480	35.09
4"	650135	12	216	36.45
4" x 3"	650119	5	160	75.62
6"	650143	4	72	137.31
6" x 4"	650150	5	90	122.29



WYE

(Spigot x Hub x Hub)

Dimension	Item	Carton	Skid	List Price
3"	650168	10	480	35.09
4"	650176	6	192	42.27



Coupling

(Hub x Hub)

Dimension	Item	Carton	Skid	List Price
3"	650606	50	1600	11.48
4"	650184	50	900	13.41
6"	650192	12	216	42.03



Reducing Coupling

(Hub x Hub)

Dimension	Item	Carton	Skid	List Price
4" x 3"	650200	30	960	20.84
6" x 4"	650218	6	288	62.98



Repair Coupling

(Hub x Hub) No Pipe Stop

Dimension	Item	Carton	Skid	List Price
4"	656249	30	960	22.42
6"	650887	6	192	43.65



90° Elbow

(Hub x Hub)

Dimension	Item	Carton	Skid	List Price
3"	650226	40	720	28.21
4"	650234	20	360	29.62
4" Short	650903	25	450	30.58
6"	650259	7	126	93.00



90° Elbow

(Spigot x Hub)

Dimension	Item	Carton	Skid	List Price
3"	650267	20	640	29.62
4"	650275	20	360	34.86
4" Short	650663	25	450	34.86
6"	650721	8	144	100.53



45° Elbow

(Hub x Hub)

Dimension	Item	Carton	Skid	List Price
3"	650283	40	1280	18.88
4"	650291	30	540	22.42
6"	650309	9	162	72.51



45° Elbow

(Spigot x Hub)

Dimension	Item	Carton	Skid	List Price
3"	650317	15	1080	17.48
4"	650325	15	480	21.02
6"	650333	10	180	77.22



22-1/2° Elbow

(Hub x Hub)

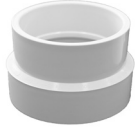
Dimension	Item	Carton	Skid	List Price
3"	650341	15	1080	28.62
4"	650358	30	540	24.36

Fittings



Bushing DWV (ABS Spigot x Sewer Hub)

Dimension	Item	Carton	Skid	List Price
3"	650374	20	2880	9.58
4"	650382	20	1440	10.95



Reducing Female Adapter (Sewer Hub x ABS Hub)

Dimension	Item	Carton	Skid	List Price
4" x 3"	650747	15	1080	24.14



Reducing Male Adapter (Sewer Spigot x ABS Hub)

Dimension	Item	Carton	Skid	List Price
6" x 4"	650762	18	324	66.84



Bushing (Sewer Spigot x ABS Hub)

Dimension	Item	Carton	Skid	List Price
3" x 1-1/2"	650390	20	2880	15.34
3" x 2"	650994	20	2880	16.75
4" x 1-1/2"	650408	50	1600	25.53
4" x 2"	650416	30	1440	34.86



4" x 3"	650424	30	1440	37.22
---------	--------	----	------	-------



Bushing (Sewer Spigot x Sewer Hub)

Dimension	Item	Carton	Skid	List Price
4" x 3"	650432	20	1440	25.31
6" x 4"	650440	10	320	33.46



Female Adapter (Hub x FPT)

Dimension	Item	Carton	Skid	List Price
3"	650457	20	1440	32.51
4"	650465	25	800	35.09



Cleanout Adapter (Spigot x FPT)

Dimension	Item	Carton	Skid	List Price
3"	650473	15	2160	22.42
4"	650481	40	1280	25.10



Cleanout Adapter (Spigot x FPT) With Plug and Gasket

Dimension	Item	Carton	Skid	List Price
3"	650945	35	1680	45.00
4"	650952	25	800	56.19



Cast Iron Adapter (C.I. Hub x Sewer Hub)

Dimension	Item	Carton	Skid	List Price
4"	650564	8	576	36.99



Threaded PLUG

Dimension	Item	Carton	Skid	List Price
3" (With Gasket)	650499	25	3600	13.95
4" (With Gasket)	650507	35	2520	19.95
4" FLUSH	650515	20	2880	20.26



P-Trap (Hub x Hub)

Dimension	Item	Carton	Skid	List Price
3"	650523	6	192	108.54
4"	650531	6	108	135.15



Toilet Flange (Hub x Flange)

Dimension	Item	Carton	Skid	List Price
4"	650549	10	720	50.31



Drain Grate (Spigot x Grate)

Dimension	Item	Carton	Skid	List Price
3"	650614	25	3600	27.66
4"	650556	25	1800	28.86



Cap

Dimension	Item	Carton	Skid	List Price
3"	650572	25	3600	12.33
4"	650580	50	1600	14.79
6"	650598	12	384	69.40

Backwater Valves

The horizontal normally closed backwater valve is intended to be used with DWV or sewer piping systems running horizontally downstream of drainage fixtures. They are used when risks of flooding due to sewer surcharge or back-up exist.

Features & Benefits:

- ③ Made of PVC durable material, will not pit or corrode
- ③ Designed with smooth walls and rounded corners that prevent accumulation of solid waste, therefore reducing chances of failure
- ③ Money saving investment in case of sewage backup
- ③ Peace of mind

PVC Backwater Valve (HxH)

Dimension	Item	carton	skid	UPC Code
3"	433656	4	108	0 62852 43365 8
4"	433664	3	96	0 62852 43366 5

PVC Backwater Valve (HxH) with 16" extension

Dimension	Item	carton	skid	UPC Code
3"	429308	1	120	0 62852 42930 9
4"	429407	1	90	0 62852 42940 8



Replacement Parts for Backwater Valves

Description	Item	Description	Item
1 1/2" & 2" Caps	326652	4" Extension Sleeve	428417
1 1/2" & 2" O-ring	622799	4" Extension Lid	428508
1 1/2" & 2" Flapper	326751	4" Cover	428201
3" Extension Sleeve	327429	4" Cover O-ring	920363
3" Extension Lid	327528	4" Flapper	328708
3" Cover	429001	4" Flapper O-ring	323907
3" Flapper	327023		
3" Flapper O-ring	327627		

Please call customer service for pricing on Backwater valve products.



PVC Sewer & Drainage Fittings

Conditions of sales

In addition to the General Terms and Conditions of Sale found on our website, <https://www.bow-group.com/terms-and-conditions>, the following also applies to all sales of our Wavin products:

Freight

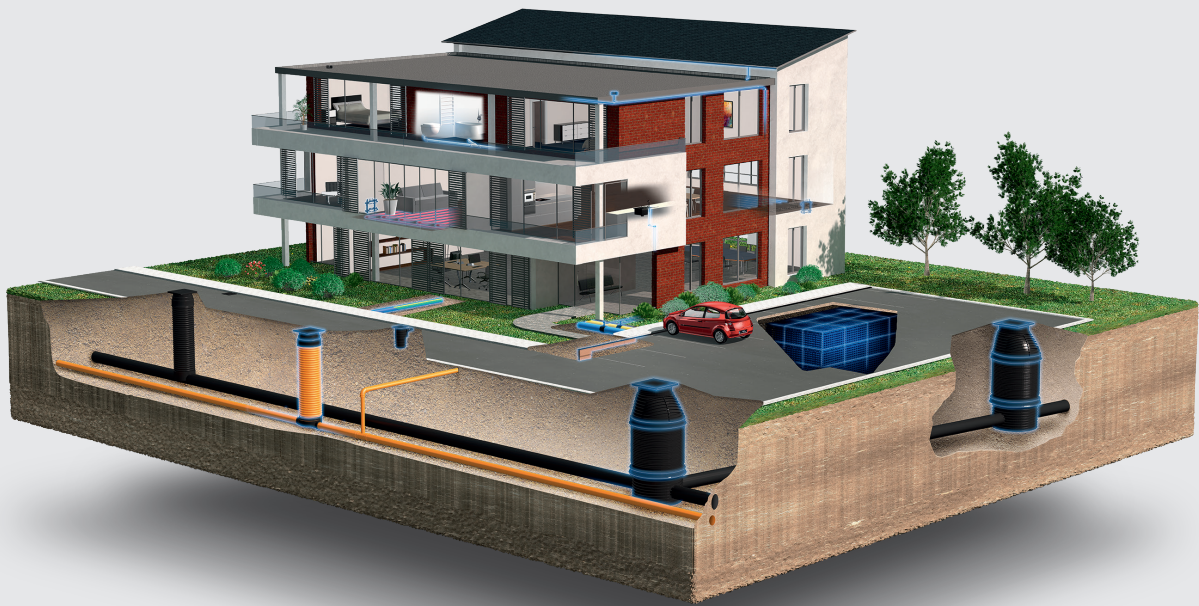
Freight is prepaid on orders totaling \$2500.00 net.
All products except ABS Pipe may be combined.

Minimum Order

The minimum order is \$300.00 net.

Discover our broad portfolio at wavin.ca

- Water management
- Heating and cooling
- Water and gas distribution
- Waste water drainage



Wavin is part of Orbia, a community of companies working together to tackle some of the world's most complex challenges. We are bound by a common purpose: To Advance Life Around the World.



Wavin operates a programme of continuous product development, and therefore reserves the right to modify or amend the specification of their products without notice. All information in this publication is given in good faith, and believed to be correct at the time of going to press. However, no responsibility can be accepted for any errors, omissions or incorrect assumptions.

Wavin 950 Winter Street, South Entrance 1st Floor, Waltham, MA 02451, United States | 5700 Côte de Liesse Montréal, QC H4T 1B1
Phone CAN 514-735-7585 / 1800-561-1169 | US 514-735-3632 / 1800-763-3632 | E-mail customer.service@orbia.com | wavin.us | wavin.ca | bow-group.com

© 2025 Wavin Wavin reserves the right to make alterations without prior notice. Due to continuous product development, changes in technical specifications may change. Installation must comply with the installation instructions.

©Montréal 4.2026