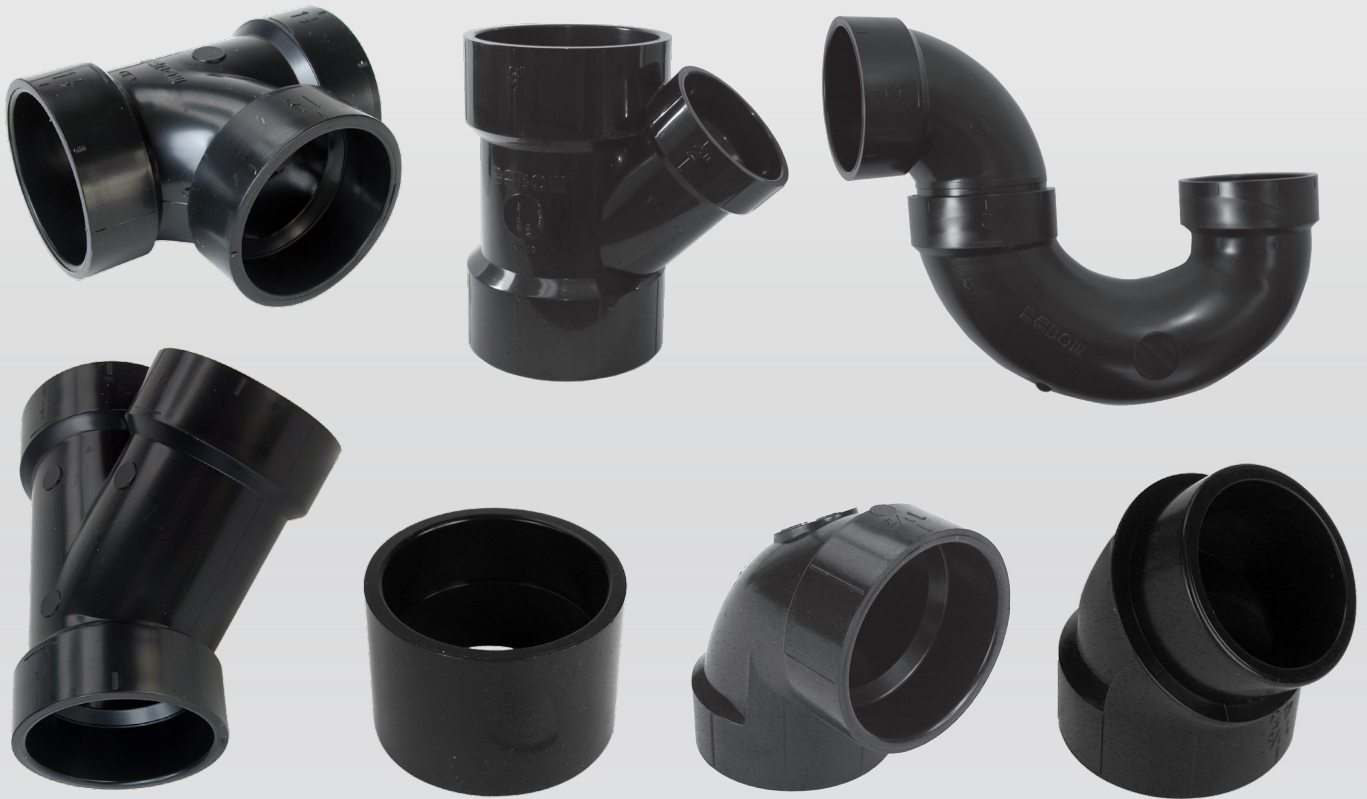




# Pricelist ABS-C0526-2 (Canada)

May 2026, Supersedes ABS-C0526  
CSA B181.1

# ABS DWV Fittings



# ABS DWV Fittings



# ABS Fittings



## Sanitary Tee

(Hub x Hub x Hub)

Dimension	Item	carton	skid	List Price
1 1/4"	600007	50	3600	68.86
1 1/2"	600015	90	2880	36.99
2"	600023	45	1440	80.09
3"	600031	20	360	153.25
4"	600049	12	216	366.16



## Reducing Tee

(Hub x Hub x Hub)

Dimension	Item	carton	skid	List Price
1 1/2" x 1 1/4" x 1 1/2"	600064	40	1920	122.49
2" x 1 1/2" x 1 1/2"	600080	35	1680	57.99
2" x 1 1/2" x 2"	600098	25	1200	106.43
2" x 2" x 1 1/2"	600114	50	1600	57.70
3" x 3" x 1 1/2"	600130	25	800	106.43
3" x 3" x 2"	600148	20	640	123.86
4" x 4" x 2"	600155	20	360	318.28
4" x 4" x 3"	600163	15	270	380.73



## TEE - Left Side Inlet

(All Hub)

Dimension	Item	carton	skid	List Price
3" x (1 1/2") SI	600171	10	320	346.75
3" x (2") SI	600189	10	320	330.23



## TEE - Right Side Inlet

(All Hub)

Dimension	Item	carton	skid	List Price
3" x (1 1/2") SI	600197	10	300	346.75
3" x (2") SI	600205	10	320	330.23



## Cleanout Tee

(Hub x Hub x FPT)

Dimension	Item	carton	skid	List Price
1 1/2"	600213	35	2520	86.67
2"	600221	20	1440	126.55
3"	600239	25	450	229.48



## Cleanout Tee

(With PPlug & Gasket)

Dimension	Item	carton	skid	List Price
1 1/2"	602854	50	3000	98.62
2"	602862	45	1440	158.50
3"	602870	15	480	260.24
4"	600270	15	270	574.86
4" x 3" x 4"	600288	15	270	460.02



## Double Sanitary Tee

(All Hub)

Dimension	Item	carton	skid	List Price
1 1/2"	600312	15	1440	119.61
2"	600320	10	720	171.72
3"	600338	5	240	272.43
4"	600346	8	144	1127.71
2" x 2" x 1 1/2" x 1 1/2"	600353	20	960	205.33
3" x 3" x 1 1/2" x 1 1/2"	600361	15	480	238.24
3" x 3" x 2" x 2"	600379	15	480	260.90



## 45° WYE

(Hub x Hub x Hub) ASTM Denotes Longer Laying Length

Dimension	Item	carton	skid	List Price
1 1/4"	600387	50	3600	101.73
1 1/2"	600395	70	2240	45.36
2"	600403	40	1280	85.71
3"	600411	20	360	170.71
4" (ASTM)	600429	12	144	478.10
4"	600791	12	216	367.67
6"	600437	2	36	1668.73
1 1/2" x 1 1/2" x 1 1/4"	600445	30	2160	64.65
2" x 1 1/2" x 1 1/2"	600452	25	1800	99.85
2" x 2" x 1 1/2"	600460	30	1440	80.77
3" x 3" x 1 1/2"	600478	20	640	120.64
3" x 3" x 2"	600486	20	640	133.79
4" x 4" x 2" (ASTM)	600494	20	240	345.24
4" x 4" x 2"	600817	20	360	265.53
4" x 4" x 3" (ASTM)	600502	15	180	433.29
4" x 4" x 3"	600833	15	270	333.32
6" x 6" x 4"	600510	4	72	1345.63



## 45° WYE

(Spigot x Hub x Hub)

Dimension	Item	carton	skid	List Price
3"	604256	25	450	389.00
3" x 3" x 1 1/2"	603167	20	720	211.36
3" x 3" x 2"	603175	20	360	203.55



## Double 45° WYE

(All Hub)

Dimension	Item	carton	skid	List Price
1 1/2"	600528	30	960	140.16
2"	600536	20	640	225.49
3"	600544	15	270	388.34
4"	600551	5	90	1154.00
2" x 2" x 1 1/2" x 1 1/2"	600569	25	1050	192.47

## Fittings



### Double 45° WYE (All Hub)

Dimension	Item	carton	skid	List Price
3" x 3" x 1 1/2" x 1 1/2"	600577	10	420	339.64
3" x 3" x 2" x 2"	600585	15	270	328.29



### 90° Elbow

(Hub x Hub) ASTM Denotes Longer Radius

Dimension	Item	carton	skid	List Price
1 1/4"	600593	75	5400	58.20
1 1/2"	600601	125	4000	25.60
1 1/2" (ASTM)	600619	110	3520	33.08
2"	600627	50	2400	40.77
2" (ASTM)	600635	50	1600	45.36
3"	600643	20	640	109.96
3" (ASTM)	600650	20	640	115.20
4" x 3" (Closet Bend)	600668	20	360	323.15
4" (ASTM)	600676	12	216	233.64
6"	600684	4	72	1228.32



### 90° Vent Elbow

(Hub x Hub)

Dimension	Item	carton	skid	List Price
1 1/2"	604074	60	4320	48.77
2"	604082	25	1800	45.39
3"	604090	30	1080	139.46



### 90° Long Elbow

(Hub x Hub) ASTM Denotes Longer Radius

Dimension	Item	carton	skid	List Price
1 1/2" (ASTM)	600700	50	2400	72.99
2" (ASTM)	604116	45	1440	127.28



### 90° Elbow Street

(Spigot x Hub) ASTM Denotes Longer Radius

Dimension	Item	carton	skid	List Price
1 1/4"	600718	75	5400	63.67
1 1/2"	600726	125	4000	26.76
1 1/2" (ASTM)	600734	45	3240	31.78
2"	600742	50	2400	68.09
3"	600759	20	640	122.73
3" (ASTM)	604215	20	640	145.60
4" (ASTM)	600767	20	480	387.20



### 60° Elbow

(Hub x Hub)

Dimension	Item	carton	skid	List Price
1 1/2"	600841	75	3600	59.02
2"	600858	40	1920	79.07
3"	600866	20	640	177.22
4"	600874	10	320	343.02



### 45° Elbow

(Hub x Hub) ASTM Denotes Longer Radius

Dimension	Item	carton	skid	List Price
1 1/4" (ASTM)	600882	100	4800	41.09
1 1/2"	600890	125	6000	20.71
1 1/2" (ASTM)	600908	125	4000	35.00
2"	600916	50	3600	35.02
2" (ASTM)	600924	45	2160	65.57
3"	600932	25	800	92.28
4"	600304	25	450	180.49
4" (ASTM)	600940	15	270	268.51
6"	600957	8	144	1175.65



### 45° Elbow Street

(Spigot x Hub) ASTM Denotes Longer Radius

Dimension	Item	carton	skid	List Price
1 1/4" (ASTM)	600965	100	6000	41.09
1 1/2"	600973	125	6000	20.99
1 1/2" (ASTM)	600981	50	3600	30.34
2"	600999	50	3600	41.83
3"	601005	25	800	98.18
4"	601435	25	450	270.49
4" (ASTM)	601013	25	450	326.88
6"	603035	8	144	1353.86



### 22 1/2° Elbow

(Hub x Hub)

Dimension	Item	carton	skid	List Price
1 1/4"	601039	100	7200	51.08
1 1/2"	601047	75	5400	31.78
2"	601054	50	3600	59.34
3"	601062	25	800	130.72
4"	601070	15	480	243.25
6"	601088	8	144	1535.37

## Fittings



### 22 1/2° Elbow Street

(Spigot x Hub)

Dimension	Item	carton	skid	List Price
1 1/2"	601096	90	6480	35.26
2"	605030	25	3600	59.34
3"	601104	30	960	138.97
4"	605048	10	480	243.25



### Coupling

(Hub x Hub)

Dimension	Item	carton	skid	List Price
1 1/4"	601112	125	9000	33.43
1 1/2"	601120	125	9000	14.73
2"	601138	100	4800	22.72
3"	601146	45	1440	55.23
4"	601153	25	800	104.23
6"	601161	12	216	607.66



### Reducing Coupling

(Hub x Hub)

Dimension	Item	carton	skid	List Price
1 1/2" x 1 1/4"	601179	125	9000	46.89
2" x 1 1/2"	601195	75	5400	40.57
3" x 1 1/2"	601203	35	2520	97.41
3" x 2"	601211	35	2520	91.26
4" x 1 1/2"	601229	20	960	147.63
4" x 2"	601245	20	960	147.63
4" x 3"	601252	30	960	128.39



### Male Adapter

(Hub x MPT)

Dimension	Item	carton	skid	List Price
1 1/4"	601260	125	12000	35.99
1 1/2" x 1 1/4"	601278	90	9720	29.79
1 1/2"	601286	125	9000	24.05
2"	601294	80	5760	37.37
3"	601302	30	2160	93.67
4"	601310	20	960	275.65



### Male (Fitting) Adapter

(Spigot x MPT)

Dimension	Item	carton	skid	List Price
1 1/4"	601328	50	10200	53.36
1 1/2"	601344	100	9600	22.98
2"	601351	60	5760	86.90
3"	601369	20	1440	132.82



### Female Adapter

(Hub x FPT)

Dimension	Item	carton	skid	List Price
1 1/4"	601377	125	9000	41.09
1 1/2"	601385	100	7200	27.40
2"	601393	75	5400	53.47
3"	601401	30	1440	97.15
4"	601419	25	800	229.24
6"	601427	15	270	939.49



### Female Adapter

With Plug & Gasket (Hub x Plug)

Dimension	Item	carton	skid	List Price
1 1/4" No Gasket	602896	100	6000	92.17
1 1/2"	602904	75	4500	68.09
2"	602912	50	3000	100.16
3"	602920	30	900	178.24
4"	602938	20	640	385.84
6"	602946	6	192	1572.68



### Fitting Cleanout Adapter

(Spigot x FPT)

Dimension	Item	carton	skid	List Price
1 1/4"	601443	100	14400	38.54
1 1/2"	601450	100	7200	33.37
2"	601468	60	4320	65.16
3"	601476	35	1680	101.73
4"	601484	25	800	174.66
6"	601492	15	270	804.79



### Fitting Cleanout Adapter

With Plug & Gasket (Spigot x Plug)

Dimension	Item	carton	skid	List Price
1 1/4" No Gasket	602953	50	10200	80.90
1 1/2"	602961	90	6480	63.66
2"	602979	50	3600	99.68
3"	602987	30	1440	150.97
4"	602995	25	800	318.03
6" (With O-ring)	603001	15	270	1237.53



### Fitting Cleanout Adapter With Cap

(Spigot x Cap) (Washer Included)

Dimension	Item	carton	skid	List Price
1 1/2"	601518	50	10200	54.15
2"	601526	25	5100	94.27
3"	601534	10	2040	188.82

## Fittings



### Bushing (Spigot x Hub)

Dimension	Item	Carton	skid	List Price
1 1/2" x 1 1/4"	601542	150	10800	27.91
2" x 1 1/4"	601559	150	4800	53.54
2" x 1 1/2"	601567	150	10800	18.61
3" x 1 1/2"	601575	35	2520	90.02
3" x 2"	601583	60	2880	64.89
4" x 1 1/2"	601591	10	960	157.35
4" x 2"	601609	20	1440	139.57
4" x 3"	605543	35	1680	125.60
6" x 4"	601625	24	432	697.80



4" x 3"	601617	35	630	124.13
---------	--------	----	-----	--------



### Bushing

(Spigot x FPT) (For Dishwasher)

Dimension	Item	carton	skid	List Price
1 1/2" x 1/2"	601633	40	11520	35.41
1 1/2" x 3/4"	601641	30	8640	39.35



### Bushing

(Spigot x FPT)

Dimension	Item	carton	skid	List Price
1 1/2" x 1 1/4"	601658	100	14400	50.61
2" x 1 1/2"	601666	125	9000	74.78



### Dishwasher WYE

(Hub x Hub x Hose Barb) (Snap-in plug is molded on fitting for use during rough-in)

Dimension	Item	carton	skid	List Price
1 1/2" x 1 1/2" x 1/2"	600809	40	2880	80.03



### Sewer Pipe Adapter

(Sewer Hub x DWV Hub)

Dimension	Item	carton	skid	List Price
4" x 3"	601674	40	1280	174.66



### Cast Iron Hub Adapter

(Soil Pipe Ferrule x DWV Hub)

Adapts to Cast Iron Hub

Dimension	Item	carton	skid	List Price
2"	601690	30	1800	111.98
4" x 3"	601716	10	960	225.55
4"	601724	15	480	332.11

### Cast Iron No-Hub Adapter

No Hub Spigot (Adapts to No-Hub Elastomeric Coupling)



Dimension	Item	carton	skid	List Price
2"	601740	50	3600	133.52
3"	601757	30	2160	151.80
4" x 3"	601773	15	1080	232.55
4"	601781	15	720	232.55



### Drain Grate (Spigot)

Dimension	Item	carton	skid	List Price
3"	603068	50	3000	109.66
4"	603076	25	1500	133.42



### Sewer Adapter Bushing

(DWV Spigot x Sewer Hub)

Dimension	Item	carton	skid	List Price
3"	601856	50	3600	53.65
4"	601864	50	1600	60.38



### Copper Pipe Adapter

(Hub x Slip Joint)

Dimension	Item	carton	skid	List Price
1 1/4"	601872	20	2880	100.24
1 1/2" x 1 1/4"	601880	50	6600	92.88
1 1/2"	601898	50	6600	75.89
2"	601906	25	5100	155.93



### Galvanized Pipe Adapter

(Hub x Slip Joint)

Dimension	Item	carton	skid	List Price
1 1/2"	601914	50	5400	96.37



### Pipe Trap Adapter Female

(Hub x Slip Joint) Self Sealing Nut

Dimension	Item	carton	skid	List Price
1 1/4"	601922	125	9000	66.51
1 1/2" x 1 1/4"	601930	100	7200	42.54
1 1/2"	601948	100	7200	41.09

## Fittings



### Pipe Trap Adapter Female

(Hub x Slip Joint) Includes Washer

Dimension	Item	carton	skid	List Price
1 1/2"	603183	100	7200	41.09
2" x 1 1/2" DWV	601955	60	4320	94.88



### Pipe Trap Adapter Female

(Hub x Slip Joint) Includes 2 Washers to fit 1-1/2" and 1-1/4" Slip Joint

Dimension	Item	carton	skid	List Price
1 1/2" x 1 1/2" and 1 1/4"	601963	100	7200	58.58



### Fitting Trap Adapter

(Spigot x Slip Joint) Self Sealing Nut

Dimension	Item	carton	skid	List Price
1 1/4"	601971	100	7200	63.67
1 1/2" x 1 1/4"	601989	100	7200	47.78
1 1/2" (long)	601997	100	6600	45.41
1 1/2" (7" Long)	602029	35	2100	156.89



### Fitting Trap Adapter

(Spigot x Slip Joint) Includes Washer

Dimension	Item	carton	skid	List Price
1 1/2" (Short)	610147	50	10200	45.66
2" x 1 1/2" DWV	602003	60	4320	106.43



### Fitting Trap Adapter

(Spigot x Slip Joint) Includes 2 Washers to fit 1-1/2" and 1-1/4" Slip Joint

Dimension	Item	carton	skid	List Price
1 1/2" x 1 1/2" and 1 1/4"	602011	80	5760	59.02



### Swivel Tray Plug (Strainer) Adapter

(Hub x FPT) Washer included

Dimension	Item	carton	skid	List Price
1 1/2"	602086	100	7200	93.27



### Union

(Hub x Hub)

Dimension	Item	carton	skid	List Price
1 1/2"	602110	25	5100	118.83
2"	602128	15	3060	213.40



### Closet Flange

One-piece plastic (Hub)

Dimension	Item	carton	skid	List Price
4" x 3"	602193	25	800	132.53
4"	602201	25	800	160.35



### Closet Flange

One-piece plastic (Hub) Molded in Test Cap

Dimension	Item	carton	skid	List Price
4" x 3"	602219	25	800	146.09



### Closet Flange

One-piece plastic (Spigot)

Dimension	Item	carton	skid	List Price
4" x 3"	602227	25	800	161.32



### Closet Flange Spacer Ring

Dimension	Item	carton	skid	List Price
4"	602243	25	1800	72.74



### Closet Flange Adjustable

(Hub) With "Snap-on" Ring

Dimension	Item	carton	skid	List Price
4" x 3"	602250	25	800	209.49



### Closet Flange Adjustable

(ONE PIECE MOLDED IN KNOCKOUT TEST CAP)  
(Fits over 3" or inside 4" ABS DWV Pipe)

Dimension	Item	carton	skid	List Price
4" X 3"	603209	25	800	106.60

**Fittings**



**Closet Flange Adjustable**

(HUB) (Molded in Test Cap) With "Snap-on" Ring

Dimension	Item	carton	skid	List Price
4" X 3"	602268	25	800	216.15



**Closet Flange Adjustable**

(Spigot) With "Snap-on" Ring

Dimension	Item	carton	skid	List Price
4" X 3"	602276	25	800	248.62



**Closet Flange Adjustable**

(Fits inside 3" pipe) Non-CSA

Dimension	Item	carton	skid	List Price
4" X 3"	603159	25	800	254.61



**Closet Flange-Offset Adjustable**

(Hub) With "Snap-on" Ring

Dimension	Item	carton	skid	List Price
4" X 3"	602292	15	480	445.05



**Flush Fit Closet Flange Adjustable**

(Molded in Test Cap) With "Snap-on" Ring  
(Fits over 3" DWV Pipe or inside 4" DWV Pipe)

Dimension	Item	carton	skid	List Price
4" X 3"	603027	25	800	142.84



**Flush Fit Closet Flange Adjustable**

(Fits over 3" DWV or inside 4" DWV Pipe)  
With "Snap-on" Ring

Dimension	Item	carton	skid	List Price
4" X 3"	603019	25	800	143.83



**P-Trap**

(Solvent-Cement Joint) (Hub x Hub)

Dimension	Item	carton	skid	List Price
1 1/2"	602326	40	1280	74.73
2"	602334	20	640	177.65
3"	602342	10	180	419.25
4"	602359	6	108	823.62



**P-Trap**

(Solvent-Cement Joint with Cleanout) (Hub x Hub)

\* Cap Washer Not Required

Dimension	Item	carton	skid	List Price
1 1/4"	602367	20	1440	268.32
1 1/2" (CAP)	*602375	40	1280	89.93
2" (CAP)	*602383	20	640	320.91



**P-Trap Adjustable**

(With Union) (Hub x Hub)

Dimension	Item	carton	skid	List Price
1 1/4"	602391	40	1920	159.10
1 1/2"	602409	40	1280	96.59
2"	602417	20	640	242.79



**P-Trap Adjustable**

(With Cleanout) (Hub x Hub) \* Cap Washer Not Required

Dimension	Item	carton	skid	List Price
1 1/4"	602425	20	1440	279.68
1 1/2"	*602433	35	1120	98.42
2"	*602441	15	480	332.12



**Siphon "S"**

(With Cleanout) (Hub x Hub) \* Cap Washer Not Required

Dimension	Item	carton	skid	List Price
1 1/4"	602474	10	2040	260.63
1 1/2" (CAP)	*602482	20	960	163.49



**P-Trap Cleanout Cap**

Dimension	Item	carton	skid	List Price
for 1 1/2" & 2"	602078	100	20400	56.03



**Caps**

(Socket Cap - SCH 40 ABS) (Hub)

Dimension	Item	carton	skid	List Price
1 1/2"	602540	90	12960	26.08
2"	602557	110	7920	42.28
3"	602565	30	2160	136.92
4"	602573	25	1200	148.28

## Fittings



### Test Cap

(Soft Polyethylene-Blue)

Dimension	Item	carton	skid	List Price
1 1/4"	602581	125	25500	27.21
1 1/2"	602599	75	10800	9.62
2"	602607	40	5760	22.22
3"	602615	35	2520	30.02
4"	602623	25	1800	35.41



### Slip Joint Nut & Washer

(\*Washer not included)

Dimension	Item	carton	skid	List Price
1 1/4" (Self-Seal)*	602037	250	18000	28.10
1 1/2"	602045	250	12000	25.72



### Threaded Cap

(Washer Included)

Dimension	Item	carton	skid	List Price
1 1/4"	602664	50	20400	53.03
1 1/2"	602672	100	20400	60.62
2"	602680	45	18360	68.09

## Backwater Valves

The horizontal normally closed backwater valve is intended to be used with DWV or sewer piping systems running horizontally downstream of drainage fixtures. They are used when risks of flooding due to sewer surcharge or back-up exist.

Features & Benefits:

- Made of ABS durable material, will not pit or corrode
- Designed with smooth walls and rounded corners that prevent accumulation of solid waste, therefore reducing chances of failure
- Money saving investment in case of sewage backup
- Peace of mind

### ABS Backwater Valve (HxH)

Dimension	Item	carton	skid	UPC Code
1 1/2"	601799	8	96	0 62852 60179 8
2"	601807	8	96	0 62852 60180 4
3"	601815	4	96	0 62852 60181 1
4"	601823	3	96	0 62852 60182 8

### ABS Backwater Valve (HxH) with 16" extension

Dimension	Item	carton	skid	UPC Code
3"	601831	1	120	0 62852 60183 5
4"	601849	1	90	0 62852 60184 2



### Threaded Plug With Gasket

(MPT x Square Head)

Dimension	Item	carton	skid	List Price
1 1/4" No Gasket	602706	100	28800	44.37
1 1/2"	602714	100	20400	31.02
2"	602722	150	10800	39.84
3"	602730	25	5100	56.00
4"	602748	35	2520	114.10
6" With O-ring	602755	20	960	482.41



### Expansion Joint

(Hub x Spigot) Type 1 (3 inch travel)

Vertical use only

Dimension	Item	carton	skid	List Price
1 1/2"	602136	10	300	348.45
2"	602144	25	1650	503.30
3"	602151	15	720	618.20



### Expansion Joint

(Hub x Hub) Type 1 (3 inch travel)

Vertical use only

Dimension	Item	carton	skid	List Price
1 1/2"	602169	10	2040	363.18
2"	602177	30	1440	520.49
3"	602185	6	432	673.84



### Replacement Parts for Backwater Valves

Description	Item	Description	Item
1 1/2" & 2" Caps	326652	4" Extension Sleeve	428417
1 1/2" & 2" O-ring	622799	4" Extension Lid	428508
1 1/2" & 2" Flapper	326751	4" Cover	328609
3" Extension Sleeve	327429	4" Cover O-ring	920363
3" Extension Lid	327528	4" Flapper	328708
3" Cover	327221	4" Flapper O-ring	323907
3" Flapper	327023		
3" Flapper O-ring	327627		

Please call customer service for pricing on Backwater valve products.



## ABS DWV Fittings

### Conditions of sales

In addition to the General Terms and Conditions of Sale found on our website, <https://www.bow-group.com/terms-and-conditions>, the following also applies to all sales of our Wavin products:

### Freight

Freight is prepaid on orders totaling \$2500.00 net.  
All products except ABS Pipe may be combined.

### Minimum Order

The minimum order is \$300.00 net.



## ABS DWV Fittings 5 YEAR LIMITED WARRANTY

Subject to the conditions and limitations in this Limited Warranty, BOW guarantees its ABS DWV pipe and fittings, against defects resulting from faulty manufacturing for 5 years from the initial date of sale by BOW. BOW will not be liable for damages caused by raw materials or component defect failures.

Defects and failures must be reported to BOW within 30 days after such failure occurs. The claimant under this Limited Warranty will be required to return the product to BOW at claimant's expense for analysis by BOW. If the conditions of this Limited Warranty are met, BOW will ship, free of charge and freight prepaid, a quantity of product equal to the failed product or will reimburse the purchase price of the failed product at BOW's option. In no case, will claims for labor charges, consequential property damage or personal injury be honored.

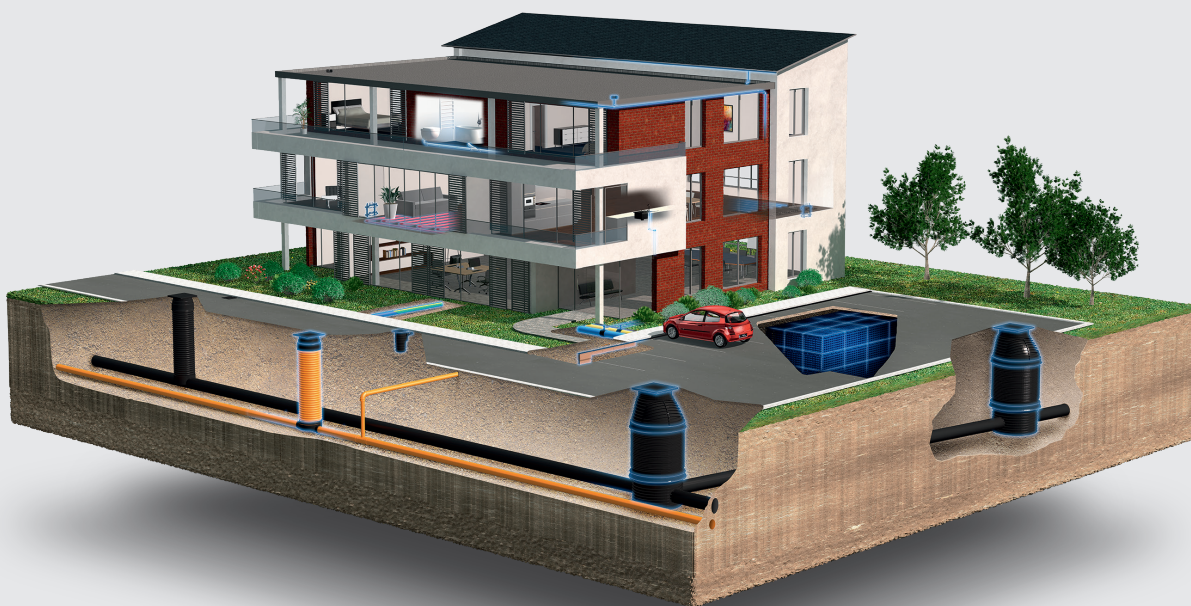
This Warranty is the only Warranty made by BOW and is expressly in lieu of all other warranties expressed by anyone or implied, including implied warranties of merchantability or fitness for a particular purpose.

The Limited Warranty will only apply:

1. If the product is installed in accordance with good plumbing and heating practices, applicable code requirements and Wavin's current published installation instructions and,
2. If the product is not misused, abused, kinked, mishandled, damaged, improperly stored, or improperly exposed to UV or exposed to excessive heat, cold or pressure or incompatible media.

# Discover our broad portfolio at wavin.ca

- Water management
- Heating and cooling
- Water and gas distribution
- Waste water drainage



Wavin is part of Orbia, a community of companies working together to tackle some of the world's most complex challenges. We are bound by a common purpose: To Advance Life Around the World.



Wavin operates a programme of continuous product development, and therefore reserves the right to modify or amend the specification of their products without notice. All information in this publication is given in good faith, and believed to be correct at the time of going to press. However, no responsibility can be accepted for any errors, omissions or incorrect assumptions.

Wavin 950 Winter Street, South Entrance 1st Floor, Waltham, MA 02451, United States | 5700 Côte de Liesse Montréal, QC H4T 1B1  
Phone CAN 514-735-7585 / 1800-561-1169 | US 514-735-3632 / 1800-763-3632 |  
E-mail customer.service@orbia.com | wavin.us | wavin.ca

© 2025 Wavin Wavin reserves the right to make alterations without prior notice. Due to continuous product development, changes in technical specifications may change. Installation must comply with the installation instructions.

©Montréal 05.2026